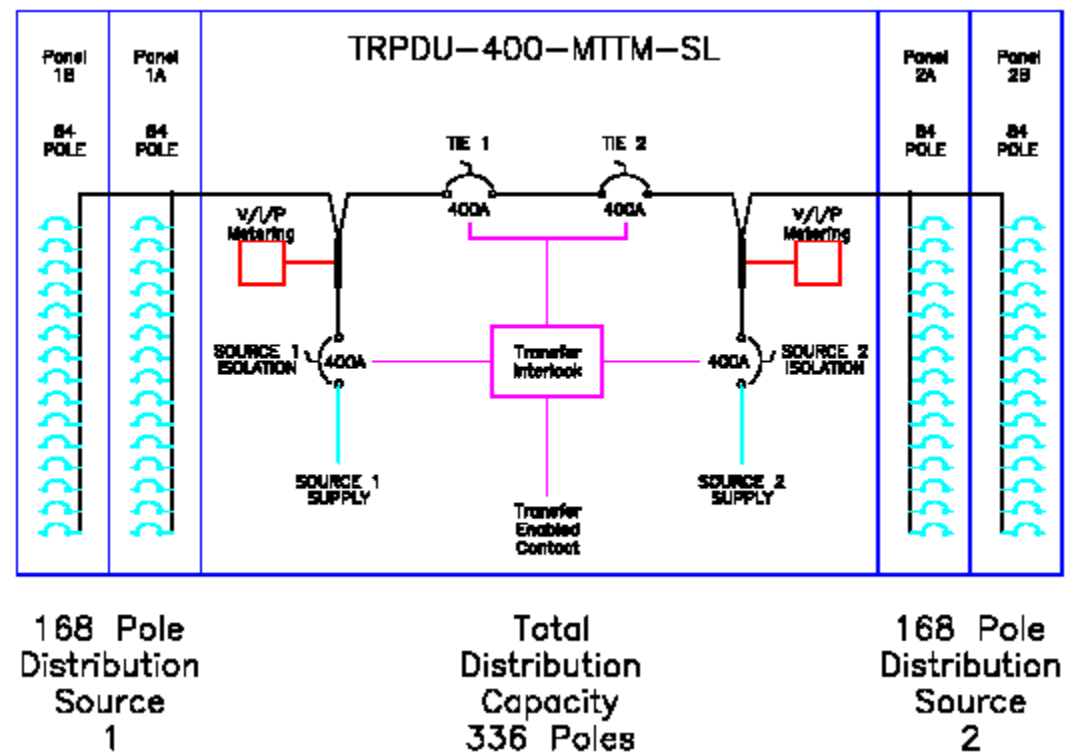




TRPDU-400-MTTM-SL

**Critical Power Distribution
Designed for the
Server Environment**

The most recent addition to the Critical Distribution RPDU line is the TRPDU-MTTM package. This unit is designed to provide for the high density power distribution requirements of the new server environment as well as offer a high level of serviceability to the critical power path. The particular unit shown in this presentation provides two discrete power paths to the server array allowing for the two chord server to be supplied from the one location. As well, this unit also allows for a closed transition tying of both distribution systems to the one source. This allows for removal of all loads from one of the sources and thus complete serviceability to that path.





The TRPDU-400-MTTM-SL is designed for installation on the wall of the computer room. The T in RPDU represents twinned which means the single cabinet can provide both discreet power supply feeds, in this case from two independent UPS system outputs. SL (Slim-Line) means the unit is wall mounted and as shown has a total of 336 circuit capability (2 x 168) with each 168 circuit side having a capacity of 400 amps at 208 volts.



In this particular application, optional indication tower lamps were utilized to provide source of power indication for each side. The two UPS systems were identified by the two colours, blue and yellow. Distribution panels, where possible, were painted the particular colour to represent the UPS source. Each side of the „twin“ Remote Power Distribution Unit has power monitoring built in for indication of load and power characteristics.



Both outside doors and internal dead fronts are easily removed. The use of high quality pin style cabinet hinges allow up to 180 ° rotation of the doors. This permits maximum access with doors in place as well as providing for the simple & safe removal of the doors by one person. Both of these features allow for additional circuits to be added while the unit is operational, as is often the requirement.

The main input breaker supplies normal „Blue“ power to the panel boards via a main distribution bus. When both sides (Blue & Yellow) are to be commonly fed from the one UPS system (Yellow) to allow service of the „Blue side, The source STS is first switched from Blue power to Yellow power providing a same source condition to exist for both sections. The controls now allow for a closed transition transfer via the tie.

- Main Breaker
- Tie Breaker (1 of 2)
- Source 1 Metering
- Control Screen



Following the transfer instructions on the control screen. The user is instructed to select the source to tie to (Source 1 / Yellow). After selecting the source, they are instructed to close the tie breakers (one in each section). After the ties are both closed for an overlap time of 1 second, the Source 1 (Blue) main breaker will automatically trip, completing the transfer.

The main input breaker and second tie breaker for Source 2 (Yellow) load are mirrored on the Yellow side. There is also a multi-function power meter for this source as well but no control panel. The two tie breaker design is utilized to provide full isolation of the two power sources during normal operation enhanced by the full mechanical barrier between the two sides.

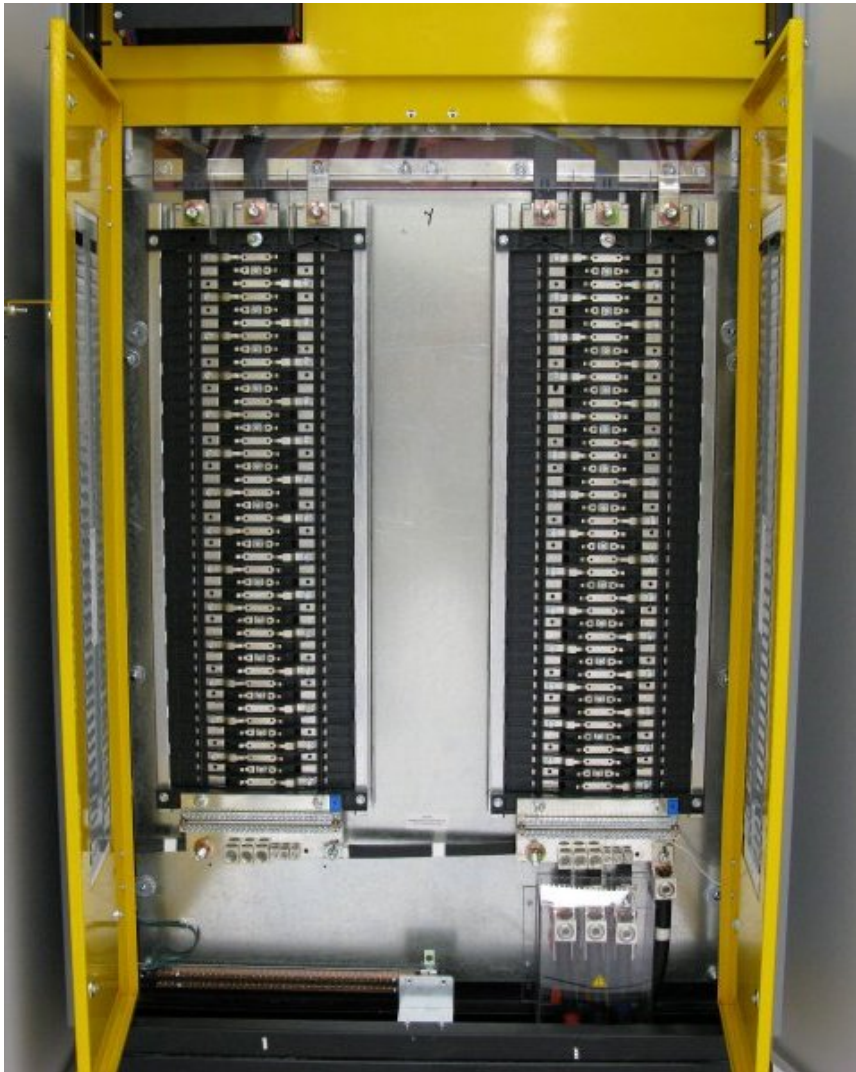
Source 2 Metering

Tie Breaker (2 of 2)

Main Breaker

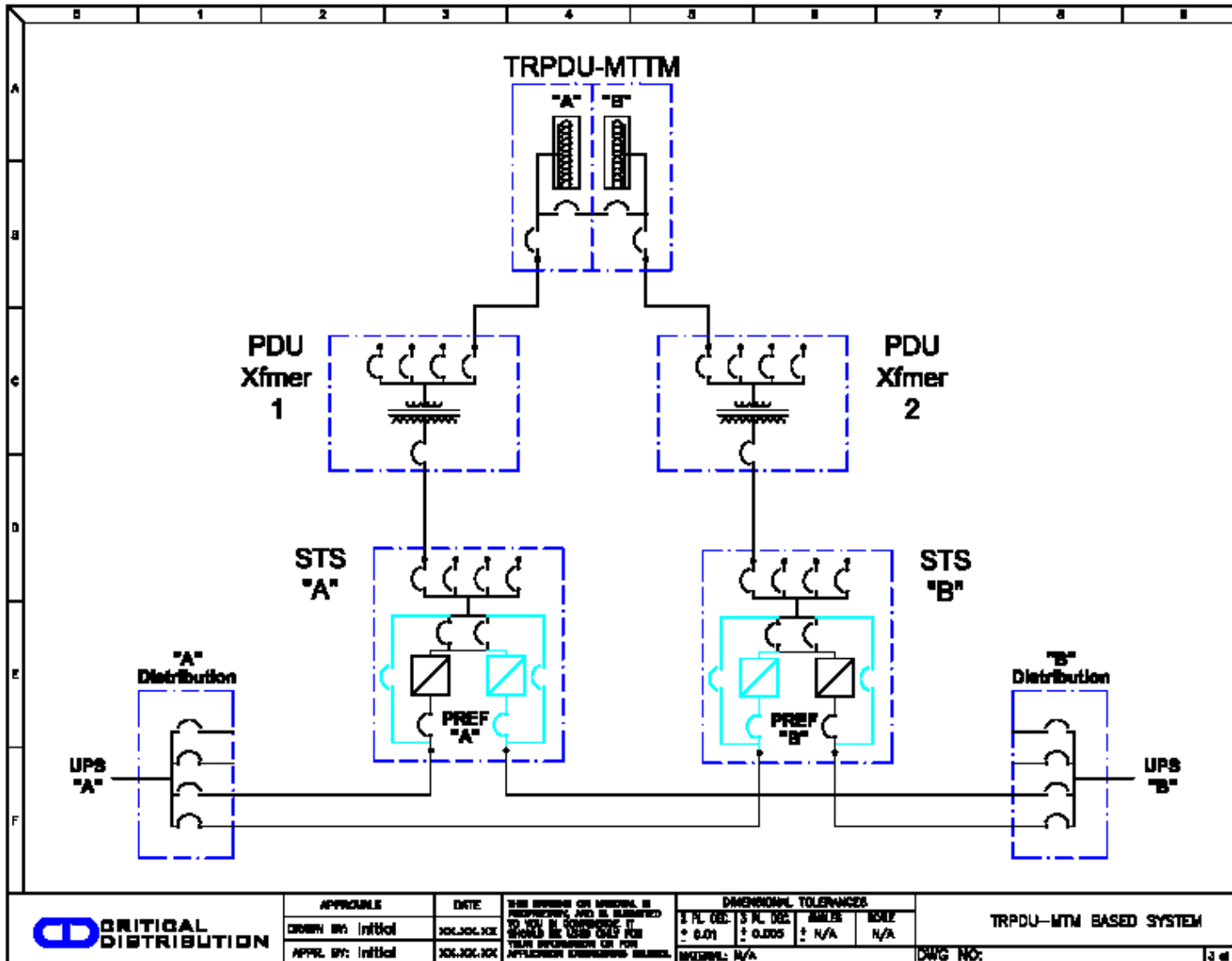


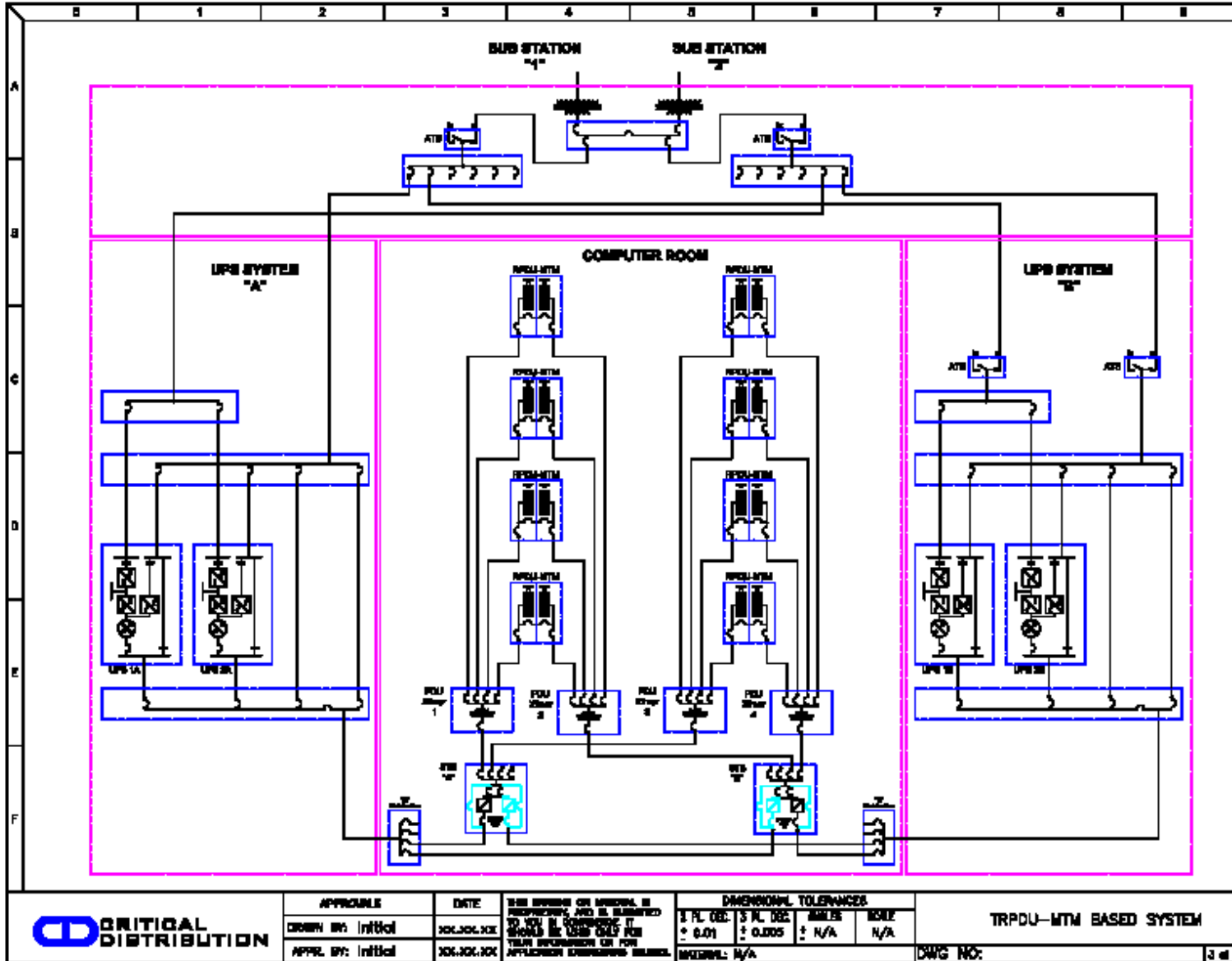
Both exterior and interior doors are mounted with pin cabinet hinges that allow easy lift-off removal of panels for service.



Termination of feeder cables is at the bottom of each cabinet below the outside 84 pole panel board. In this case, this is a 400 amp termination utilizing high capacity „flexi-bus“ for internal feeds. The total size of this package is 80“ tall x 80“ wide and only 8.5“ deep.







For sales or technical inquiries please contact:

Critical Distribution Sales
PO Box 431
Binbrook, Ont.
L0R 1C0

Tel: (905) 692-0073

Fax: (905) 692-0976

E-mail: sales@criticaldistribution.ca

www.criticaldistribution.ca